

**DUVAL COUNTY
COUNCIL of
*PTAs/PTSAs***



HANDBOOK
2010 - 2011

Helping Hands - Embracing Hearts

TABLE OF CONTENTS

DUVAL COUNTY COUNCIL GENERAL MEETINGS.....	1
DUVAL COUNTY COUNCIL PTA WORKSHOPS AND SPECIAL EVENTS	1
MAPS	2
DUVAL COUNTY COUNCIL BOARD OF MANAGERS.....	3
DUVAL COUNTY COUNCIL OF PTAS/PTSAS	3
ELECTED OFFICERS	3
STAR (SCHOOL TRAINING AND RESOURCE) TEAM	3
COMMITTEE CHAIRMEN	4
SUPERINTENDENT OF SCHOOLS	5
CONSULTANTS	5
EX-OFFICIO DUVAL COUNTY COUNCIL BOARD MEMBERS	5
DISTRICT ADVISORY COUNCIL	5
FLORIDA PTA OFFICE.....	6
NATIONAL PTA OFFICES	6
DUVAL COUNTY SCHOOL BOARD 2010 - 2011	7
DUVAL COUNTY SCHOOL CALENDAR 2010 - 2011.....	8
WHAT IS A COUNCIL?	9
GUIDELINES.....	10
COUNCIL DELEGATES AND ALTERNATES FOR YOUR PTA	10
FOUNDERS' DAY PROGRAM.....	11
NATIONAL PTA REFLECTIONS PROGRAM	12
THE TEACHER SUPPLY DEPOT AWARD.....	14
SCHOLARSHIP FUND PROGRAM	15
CONVENTION FUND PROGRAM.....	15
VISION SCREENING PROGRAM AND AWARD	16
DCCPTA EYE EXAM/EYEGLOSS FUND	16
2010-11 - DUVAL COUNTY COUNCIL PTA DUES PAYMENT FORM	17
2010 -11 STATE & NATIONAL DUES	19
MEMBERSHIP: AN INVESTMENT IN CHILDREN	20
CORRECT USAGE OF THE PTA OR PTSA SERVICE MARK	21



Duval County Council of *PTAs/PTSAs*

P.O. Box 5397, Jacksonville, FL 32247
NEW Website: www.dccpta.org

Dear PTA Members,

Welcome to the new school year! It is hard to believe that we are already well into the second decade of the 21st century, but it is also very exciting. We are better equipped today than ever before to accomplish the vision, mission and purposes of PTA, and our theme for the year focuses on that idea:

Helping Hands – Embracing Hearts

Everyday we approach our PTA work with helping hands, and we use those hands to embrace the hearts of our school communities. At some schools, we may work with teachers to recruit and train volunteers to assist with basic classroom tasks and at other schools we may plan and implement school-wide events. No matter where we are, important work is getting done!

With all the work there is to do, it is easy to forget that we must take the time to build our membership, so we have better informed parents, faculty and community members. As new or established leaders at your school, you already know how important it is to be engaged in your child's education. Now is the time for you to encourage others to do the same. We must all use our voices to advocate on behalf of our children, and PTA provides the opportunity to make it happen! Your members have a voice at your school, you have a voice at the district level by participating in County Council meetings and events, and we all have voices that must be united in working to influence policy and funding decisions by our legislators, so we may adequately provide for our children's future through education. The PTA motto says it best:

Every Child, One Voice

The Duval County Council is here to support all of your efforts throughout the year. If you have a question or are in need of assistance, please do not hesitate to call on us. We hope that you will plan to join us at our monthly meetings and take the time to read our regular communications. The monthly meetings will feature speakers and information that you can both learn from and consider bringing back to your schools as program ideas. Many local unit leaders have shared with us how much they appreciate the e-mail reminders and updates. If you ever have ideas or suggestions for district-wide events and activities for our board to consider, please let us know.

Finally, please share with us the exciting things happening at your schools! We love to hear what is happening within our local units, so we can share best practices and celebrate YOU! It is easy to look around and think of the things you are not getting done, but it is so important to take the time to reflect and be proud of all that you are doing. Never doubt that it matters!

On behalf of the Board of Managers of the Duval County Council of PTAs/PTSAs, I wish you all the best for an amazing year!

Melissa Kicklighter

President, 2010-2011

Duval County Council of *PTAs/PTSAs*

President@dccpta.org

Other Important Websites:

www.floridapta.org

www.pta.org

www.duvalschools.org

www.50thnomore.org

www.saveduvalschools.org

PTA Vision: What the future will look like if PTA accomplishes its mission.

Making every child's potential a reality

PTA Mission: The overall purpose of PTA

- A powerful voice for all children,
- A relevant resource for families and communities,
- A strong advocate for the education and well-being of every child.

PTA Purposes: Historical Goals of PTA

- To promote the welfare of children and youth in home, school, community and place of worship.
- To raise the standards of home life.
- To secure adequate laws for the care and protection of children and youth.
- To bring into closer relation the home and the school, that parents and teachers may cooperate intelligently in the education of children and youth.
- To develop between educators and the general public such united efforts as will secure for all children and youth the highest advantages in physical, mental, social and spiritual education.



Hello PTA Members,

Welcome Back! I hope that each of you had a relaxing summer and feel refreshed as we start the 2010/2011 school year.

As you know, we have been working hard to continue to provide opportunities to all of our students, and as part of that have expanded our Acceleration Programs. Acceleration Programs allow highly motivated students the opportunity to earn college credits while in high school. For the 2010/2011 school year, a High School Acceleration Program will be available in each region of the district (North, South, East and West). The four acceleration programs are Cambridge Advanced International Certificate of Education (AICE), Advanced Placement Honors (AP), Early College, and International Baccalaureate Diploma (IB).

Unfortunately we anticipate that the budget shortfall we are currently seeing may grow with the loss of Federal stimulus money in 2011/2012, so we must remain fiscally responsible, presenting a balanced budget.

Our district is making gains in spite of our budget being significantly cut each year. We are committed to the success of every student and plan to build on the high level of support provided by our community of families, businesses, and community and faith-based organizations.

We have been working under an approved Strategic Plan since 2008, which provides targets that are specific and measurable to ensure the academic success of Duval County students. We can't do this alone. We are committed to success, and it is our intent to make clear and measurable progress every year toward our long-term objectives.

We have had many success stories; however, like many school districts across the state, some of our schools experienced declines in FCAT performance. These mixed results confirm that we must continue at an aggressive and accelerated pace to ensure that our students and schools are successful.

Through the commitment of our students, the dedication of our teachers and the support of the community, we strongly believe that together we will be successful.

Have a wonderful school year!
Sincerely,

A handwritten signature in black ink that reads "Ed Pratt-Dannals". The signature is written in a cursive, slightly slanted style.

Ed Pratt-Dannals
Superintendent



This book or the information therein
should not be given to any person or organization
without the approval of the Board of Managers of the
Duval County Council of *PTAs/PTSAs*.

Foreword

This Handbook is prepared for the Duval County Council Board of Managers, Local Unit Presidents, Duval County School Board Members, and designated members of the Florida PTA Board of Managers.

Remember - when you need assistance, you may call any member of the Board of Managers and he or she will be most happy to help you. That's the real reason for the existence of your council.

Watch for and read County Council's e-mails and visit the website www.dccpta.org for information appropriate to specific officer or chairperson responsibilities and/or areas of interest. This Handbook is to be used as a basic resource guide. It is our hope that you will supplement these basic tools with the additional resources that you need to help you and your board members the most from the website.

Duval County Council General Meetings

August 24, 2010	January 18, 2010
September 21, 2010	February 15, 2010
October 19, 2010 @ Teacher Supply Depot	March 15, 2010
November 16, 2010	April 19, 2010 w/Awards Deadline
December - No meeting	May - P&P Luncheon TBA

Note: - General Meetings are held on 3rd Tuesday of each month unless otherwise stated.
- There is no General Meeting in December or May.

Where: - General Meetings are held at School Board Building – see Maps insert unless otherwise stated.

School Board Building
1st Floor, Cline Auditorium
1701 Prudential Drive
General Info Phone: 390-2000

Time: 9:30 a.m. – Check-In & Hospitality
10:00 a.m. – Meeting Begins

Duval County Council PTA Workshops and Special Events

DCCPTA hosts a variety of workshops and special events throughout the year. All will be announced as the year progresses. Watch the DCCPTA Calendar of events at www.dccpta.org for updates and details as they are available. Most workshops and events will be held at either the DCPS Building or the Schultz (TEAM) Center – see Maps insert. Some of the topics include the following:

Fall Leadership Training	Spring Leadership Training
Health and Safety Fair	Vendors' Fair
Legislative/Pre-Convention Platform	Presidents' and Principals' Luncheon

NEW!!! Student Leadership/Principal's Leadership Academy



Duval County Council Board of Managers

2010 - 2011

Duval County Council of PTAs/PTSAs

P.O. Box 5397
Jacksonville, 32247

Website: www.dccpta.org

Elected Officers

President

Melissa Kicklighter
614-0632
President@dccpta.org

Corresponding Secretary

Africia Davis
514-5918
Africiadavis333@yahoo.com

1st Vice President

Shelley Gill-Cain
642-8737
cainsg@cdm.com

Recording Secretary

Rowena Nagales
223-5778
wennkids@aol.com

2nd Vice President

Gretchen Lynch
333-0849
t-lynch@comcast.net

Treasurer

Mary Lobello
693-4822
msbljr@aol.com

3rd Vice President

Kim Sheldon
716-9105
ksheldon.pta@comcast.net

Parliamentarian (Presidential Appointee)

Betty Marty
744-0661
bmarty@mindspring.com

STAR (School Training And Resource) Team

Felicia Bullock
317-9345
fabb@comcast.net

Patti Simons
223-1756
kandp@comcast.net

Mitzi Cavin
886-9029
mitzicavin@aol.com

Eulyssa Williams
910-0473
biscaynepta@yahoo.com

Mindy Eisman
733-9958
Eism100@gmail.com

Pam Witt
821-8172
Witt_p@bellsouth.net

Cheryl Reid
777-2227
colliedoglover@yahoo.com

*** Please contact 2nd Vice President, Gretchen Lynch to arrange for assistance from the STAR Team.**

Duval County Council Board of Managers
2010 - 2011
Committee Chairmen



Awards

Amanda Welch
908-9753
mandiwelch@bellsouth.net

Bylaws

Vicki Drake
251-3429
vld4jc@aol.com

Character & Spiritual

Diana Elenz
742-6091
dianaelenz@bellsouth.net

Council/Local Relations

Betty Marty
744-0661
bmarty@mindspring.com

Cultural Arts

Shelley Gill-Cain – Interim
642-8737
cainsg@cdm.com

Environmental

Chris Buckley - Interim
381-7480
buckleyc@duvalschools.org

Exceptional Student Education

Jill Fane
376-5983
jhfan@comcast.net

Eyeglass Fund Coordinator

Tracy Scott
778-0300
tscott0300@att.net

Health & Safety

Laura Maloney
202-5271
Laura.cagle@bmcjax.com

History

Victoria Richmond-Davies
388-1254
victoriarichdav@aol.com

Hospitality

Tara Bassett
708-2080
tlt727@aol.com

Legislation

Ted Corley
755-3191
tedprayjax@aol.com

Marketing/ Communications

Kimberley Sheldon
292-9105
ksheldon.pta@comcast.net

Membership

Vilma Morgan
868-2673
heartmorg6@bellsouth.net

Presidents' & Principals' Luncheon

Lisa Page
384-4524
page.l@comcast.net

Reflections

Reta Russell-Houghton
514-5056
reruho@hotmail.com

Registration

Erin Wiggins
626-6801
erincwiggins@hotmail.com

Resources

Juliann Gaus-Graeser
716-8014
jjuliannclub@aol.com

Scholarship

Shelley Gill-Cain
642-8737
cainsg@cdm.com

Student Leadership

Annette Worthen
778-8080
annettheworthen@gmail.com

Technology

Vickie Hamby
993-7654
webmaster@cmusolutions.com

Workshop Coordinator

Terry Chrisley
622-7305
tchrisley@clearwire.net

* If you have any questions pertaining to Chairmanships, please contact:
3rd Vice President, Kimberley Sheldon.



Duval County Council Board of Managers
2010 - 2011

Superintendent of Schools

Ed Pratt-Dannals

Office: 390-2115

prattdanne@duvalschools.org

Consultants

Chartwell's

Sara Murphy
423-314-3453, 732-5117x128
Sara.murphy@compass-usa.com

Karen Lombardi
562-8955
Karen.lombardi@compass-usa.com

DCPS Community and Family Engagement

Cynthia Jones-Humphrey
390-2935
Jonesc18@duvalschools.org

EE/SS Community and Parent Involvement

Rosemarie Parsch
346-4601x116
Parschr@duvalschools.org

FDLRS/Crown

Judy Glendenning
346-4601x118
glendennij@duvalschools.org

Military School Liaison Officers

Judy Cromartie, NS Mayport
270-6289x1305
judith.cromartie@navy.mil

Dawn Mills, NAS Jacksonville
486-8221
dawn.m.mills@navy.mil

Parent Education

Debra Keels
630-6728
keelsd@duvalschools.org

Save Duval Schools

Julie Delegal
982-4211
julie@delegal.net

School Education

Maxine Holcomb
858-6346
holcombm@duvalschools.org

Teacher Supply Depot

Chris Buckley
381-7480
buckleyc@duvalschools.org

Ex-Officio Duval County Council Board Members

Florida PTA Immediate Past President

Lenelle Cruse
363-1936
lbcrusePTA@comcast.net

Florida PTA Region 3 Representative

LaTasha Green-Cobb
294-4386
eccen21@aol.com

Florida PTA Vice President of Organization

Cedric Cruse
363-1936
ccruse8219@comcast.net

Florida PTA Student Involvement

Curtis Cobb
568-4807
curtcobbjr@aol.com

District Advisory Council

Rachel Raneri
860-3411
rachel@raneri.com



Florida PTA Office

**Karin Brown
State President 2008-2010**

1747 Orlando Central Parkway
Orlando, Florida 32809
Phone – (407) 855-7604
FAX – (407) 240-9577
Toll Free – (800) 373-5782

Website: www.floridapta.org
Email: fptastateoffice@floridapta.org
Office Hours: Mon – Fri; 8:00 am - 4:30 pm



OFFICE STAFF

Executive Director – Interim	Leslie Bailey	leslie@floridapta.org
Communications Director	Leslie Bailey	leslie@floridapta.org
Bookkeeper	Lorri Thomas	lorri@floridapta.org
Membership Secretary	Kay Stephens	kay@floridapta.org
Publications Specialist	Annette Wilson	annette@floridapta.org

Florida PTA Events

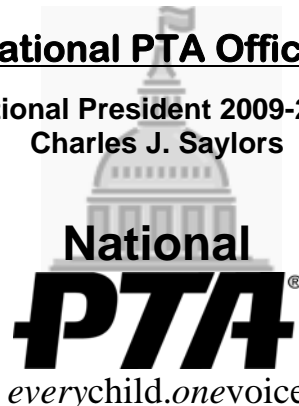
Convention 87 th Annual	November 3-5, 2010	Orlando
Leadership Conference	July 15-17, 2011	Tarpon Springs

The *Florida PTA Bulletin* is the major instrument by which the Florida PTA disseminates information to all local units and councils in the state and by which it promotes the work of the Florida and National Congresses. Each local and council president receives the Bulletin electronically via e-mail. Contact the Florida PTA Office to subscribe.

National PTA Offices

**National President 2009-2011
Charles J. Saylor**

PTA National Headquarters
1250 N. Pitt Street
Alexandria, Virginia 22314
(800) 307-4PTA (4782)
FAX: TBA



Website: www.pta.org
Email: info@pta.org

PTA Office of Programs & Public Policy
1400 L Street, NW
Suite 300
Washington, D.C. 20005-9998
(202) 289-6790
FAX (202) 289-6791
Hotline: (888) 425-5537

Each local unit PTA President receives the National PTA Our Children magazine at no cost. Please share this valuable publication with fellow board members and/or budget to subscribe for multiple issues.

Our Children is available to all PTA members @ \$15 per year (5 issues).

Our Children is also available in an on-line version @ www.pta.org.



Duval County School Board

2010 - 2011

Martha Barrett, District 1 (City Council Districts 1 & 2)

Office 390-2371
barrettm@duvalschools.org

***Nancy Broner, District 2 (City Council Districts 3 & 13) – Vice Chair**

Office 390-2386
bronern@duvalschools.org

W.C. Gentry, District 3 (City Council Districts 4 & 5)

Office 390-2239
gentryw@duvalschools.org

***Brenda A. Priestly Jackson, District 4 (City Council Districts 7 & 8) - Chair**

Office 390-2374
priestlyjb@duvalschools.org

Betty Burney, District 5 (City Council Districts 9 & 10)

Office 390-2375
burneyb@duvalschools.org

***Vicki Drake, District 6 (City Council Districts 11 & 12)**

Office 390-2373
drakev@duvalschools.org

Tommy Hazouri, District 7 (City Council Districts 6 & 14)

Office 390-2372
hazourit@duvalschools.org

*** indicate DCPB Board seats that will change in November of 2010**

School is what WE make it!

SPEAK FOR CHILDREN!

Attend School Board Meetings

1st Tuesday of every month beginning at 6:00 p.m.
Workshops - as announced

Duval County School Board Building

1701 Prudential Drive

1st Floor, Cline Auditorium

www.duvalschools.org



Duval County School Calendar
www.duvalschools.org
 2010 - 2011



<u>Important Dates</u>	<u>Description</u>	<u>Students</u>	<u>Teachers</u>	<u>Staff</u>
August 16-20	Preplanning	Off		
August 23	First Day / Students			
September 6	Labor Day	Off	Off	Off
October 22	End of Grading Period			
October 25	Planning	Off		
November 11	Veteran's Day	Off	Off	Off
November 12	Weather – Day 1	?	?	
November 24	Weather – Day 2	?	?	
November 25-26	Thanksgiving	Off	Off	Off
December 20	Weather – Day 3	?	?	
December 21	Weather – Day 4	?	?	
December 22	Weather – Day 5	?	?	
December 23-24	Winter Holiday	Off	Off	Off
December 27-30	Winter Break	Off	Off	
December 31	Winter Holiday	Off	Off	Off
January 17	M. L. King Birthday	Off	Off	Off
January 19	End of Grading Period			
January 21	Planning	Off		
February 21	President's Day	Off	Off	
March 24	End of Grading Period			
March 25	Planning	Off		
March 28 – April 1	Spring Break	Off	Off	
April 22	Spring Holiday	Off	Off	Off
April 25	School Closed	Off	Off	
May 27	School Closed	Off	Off	
May 30	Memorial Day	Off	Off	Off
June 10	End of Grading Period			
June 10	Last Day / Students			
June 13-14	Planning	Off		

<u>Early Dismissal Days</u>
September 8 & 22
October 6 & 20
November 3 & 17
December 8
January 12 & 26
February 2 & 16
March 2 & 23
April 6 & 20
May 4



What is a Council?

A council of Parent Teacher Associations is a group of Local PTAs organized under the authority of the State PTA, for the purpose of conference, leadership training, and the coordination of efforts of the member PTAs. Each local unit in Duval County pays annual dues to the council in the amount of \$35.00.

Each council is governed by bylaws approved by Florida PTA, written to meet its specific needs.

A council serves as a medium through which PTAs of an area can together handle problems and projects too large for one PTA working alone. Organized into a council, a group of PTAs can bring more power to bear on solutions of community-wide problems affecting children and youth.

A council acts as a channel of communication by relaying information, instruction, and news from the State and National Congresses of PTAs in membership. It alerts the PTAs to State and National plans, programs, and projects that serve the community.

A council enables PTA officers and chairmen to exchange ideas and plans; to benefit from each other's experiences in PTA work; and to learn new techniques of leadership.

Council meetings are used to increase the effectiveness of PTAs; to give practice in procedures and techniques; to stimulate PTA, council or public action; and to interpret and participate in State and National programs.

A council strengthens the local units, develops leaders, engages in worthwhile community service projects, and broadens and deepens public understanding of home-school cooperation. In so doing, it extends PTA influence and thus benefits all children and youth.

A council works with the Region Representative, knowing that through cooperation much can be accomplished.

In financial, as in all affairs, a council sets a good example for its member PTAs. No PTA may be compelled to contribute to special projects or to participate in a money-raising event against its wishes.

A council may not legislate for the local unit, but should counsel with courtesy, understanding and perception, knowing that each unit is autonomous.

Council Provides

- Policies and Procedures for Council Board Members
- Handbooks for local unit presidents
- Monthly meetings filled with the latest education information
- Guest speakers for interested groups upon request
- Program Ideas
- Legislative Updates
- Regular e-mail communications for presidents, delegates, and treasurers
- Professional eye examinations and/or eyeglasses for children whose parents are unable to provide the services
- Scholarships to high school seniors who plan to attend college in the next school year
- Meetings for local unit board members upon request
- Local unit bylaws reviews
- Participation in local unit PTA Officer Installations
- Self-Studies for local units
- Facilitation of conflict resolution
- Participation in local unit PTA programs
- Organization of new PTAs
- Issue-oriented workshops

Guidelines

Council Delegates and Alternates for Your PTA

- **Two delegates may represent each local unit at Duval County Council meetings:**
 1. Local unit president (or registered alternate) and
 2. Local unit council delegate (or registered alternate)
- **All delegates and alternates must be registered with Duval County Council at the beginning of the school year.**
- **Only duly selected delegates or their alternates may participate in council business.**
- **Delegates should be capable, experienced members. To function at best advantage, the Council needs both experienced and new delegates.**
- **Your job, Council Delegate, is to keep lines of communication open between the council and your local unit, and between your local unit and the council.**
- **You have the responsibility of channeling information from your PTA to the council.**
 - a. You should attend all meetings of the Council and all meetings of the local association that you represent. When you cannot do so, see that your duly elected or appointed alternate attends in your place.
 - b. You represent your PTA in the voting body of the Council and are entitled to make motions, discuss motions and vote at council meetings.
- **You have the responsibility of channeling information from the council to your PTA.**
- **This means that you ---**
 - a. Take notes at council meetings so that you can report announcements and important action to your local unit.
 - b. Notify members of your PTA's executive board of the next council meeting and urge them to attend.
 - c. Share council communications and resources with your executive board and, if possible, put announcements of council activities in your local unit newsletter or on your website.
 - d. Start a "Procedure Book" on your activities as a council delegate which will be helpful for the guidance of your successor and future delegates.



Founders' Day Program

In 1870 the census reported that 7500, children between the ages 10 and 15 were working throughout the country. This number increased over the next few years.

Then in the 1890s someone started asking questions. Why should countless children or uneducated and poverty-stricken parents be working in dark, damp, factories? Why should they be denied the benefits of good food, adequate shelter, wholesome fresh air and education?

This someone was Alice McClellan Birney of Washington D.C., who did not stop with just asking questions and worrying about these little ones. She went to work to change things. She realized that the mothers of these children had to be educated and the nation made to recognize the importance of the child. Why not have a National Congress of Mothers? By joining forces with Phoebe Apperson Hearst, the first Congress was held February 17, 1897. Our founders hoped for two hundred to attend. Two thousand came, and PTA was on its way.

Because of the dual system of schools throughout the country, black parents organized the National Congress of Colored Parents and Teachers in 1926 and Selena Sloan Butler was founder and first president. The two separate groups became one nationally in 1970, but merged in Florida in 1968.

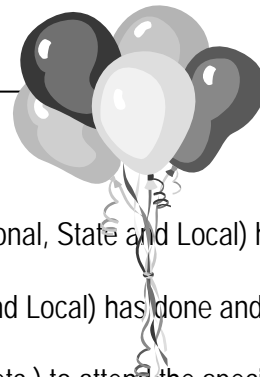
Florida became the 38th state to organize a "branch" when the Duval County Federation of Mothers Clubs and West Riverside PTA of Jacksonville invited groups from all over the state to meet together in 1921. A charter was granted on April 14, 1923 when the Florida Congress satisfied the requirements for 20 associations with a total membership of 500. The Duval County Council of PTAs was organized in 1926.

Looking back to that first meeting in Washington, we discover that we still have many of the same concerns for children. Advocates for children are needed more today than they were in 1897 and our role will continue to grow.

It is important to remember the work of our first leaders. We should pause each year and pay tribute to them through our observance of Founders' Day each February.

We can do this best by:

1. Resolving to work harder for PTA concerns.
2. Making the community aware of what the PTA (National, State and Local) has done and is doing.
3. Having displays on what the PTA (National, State and Local) has done and is doing.
4. Inviting community leaders (Mayor, Commissioner, etc.) to attend the special Founders' Day Program.
5. Highlighting the work of local volunteers. If your state is gathering information on the number of hours PTA volunteers put in, you'll be pleasantly surprised. Recognize all of them on Founders' Day.
6. Providing an opportunity for a special Founders' Day gift. Monies collected at an observance for Founders' Day or designated in the budget should be forwarded to the State PTA office. Half of this remains in the State and half is sent to National, but it all comes back to you in services such as leadership training and organizing new PTAs.



DCC Supported Programs and Projects

NATIONAL PTA REFLECTIONS PROGRAM

One of PTA's most exciting programs!

For 40 years, the annual Reflections Program has encouraged millions of students across the nation and in American schools overseas to create works of art for fun and recognition. The National PTA Reflections Program is designed to enhance rather than replace a quality arts education. It provides opportunities for students to express themselves and to receive positive recognition for their artistic efforts. **There are six different areas in which students may participate: literature, musical composition, photography, visual arts, dance choreography, and film/video production.** Each year, the Reflections Program challenges students to create art that supports a specific theme. Themes are selected from thousands of ideas submitted by students to the National PTA's Reflections Program Theme Search.

Student works are critiqued against others in the same levels of competition (Primary: Preschool-Grade 2; Intermediate: Grades 3-5; Middle/Junior: Grades 6-8; Senior: Grades 9-12). This allows recognition and judging of artworks by appropriate developmental age and skill levels.

Young artists get involved in the Reflections Program through their local PTA or PTSA. Any PTA/PTSA in good standing can sponsor a Reflections Program. A student may submit an entry in any of the six arts areas. Only original works of art are accepted. Depending on state and local PTA guidelines, students may enter more than one work of art.

The Reflections Program is structured for PTAs to recognize students at the local, council, district, state and national levels. Entries are first judged at the local level where selected works are chosen to represent the PTA at each subsequent level—council, district, or state—depending on each state PTA's structure. Once entries reach the state level, the state PTA may select entries to submit to the National PTA. Awards of Excellence and Awards of Merit are recognized at the annual National PTA Convention and displayed in a virtual gallery on National PTA's website.

(Above information is from www.PTAreflections.org)

2010 - 2011 REFLECTIONS

THEME: "Together We Can..."



Duval County Council PTA Information

- **DCCPTA Reflections Chair: Reta Russell-Houghton, Ph: 514-5056, Email: reruho@hotmail.com**
- **DCCPTA Turn-in Date and Time: Wednesday, December 1, 2010 / 9am-12 Noon**
- **Turn-in Location: School Board Building, 6th Floor Conference Room #613, 1701 Prudential Drive.**
(Note: You must bring a photo ID to enter the School Board Building).

Reflections Judges: Duval County Council judges are professionals, teachers, and professors in the respective arts areas (not from participating schools nor affiliated with Council). If you would like to volunteer or recommend judges, please call the DCCPTA President or Reflections Chair.

(Please see the following page for instructions and rules.)

HOW DOES MY PTA GET STARTED IN THE REFLECTIONS PROGRAM?

First, you must go to the Florida PTA website and print out the rules and entry forms. MOST of the information you need is at this site and is not reprinted here because of space limitations.

GO TO: www.PTAreflections.org

IMPORTANT! ...The following are...

Duval County Council's Additional Rules:

1. Each school may submit up to six (6) entries in each area, for a total of thirty-six (36) entries. Please note: Elementary schools have two (2) levels of competition (Primary and Intermediate), which means they can submit up to two (2) sets of thirty-six (36) entries.
2. Students may submit more than one entry and enter more than one area.
3. Literature entries must have the original plus four (4) copies, with word count on page 1.
4. PTA/PTSA must be in "GOOD STANDING":
 - a. BYLAWS of Local Unit PTA/PTSA must be current through March 2011.
 - b. The DCCPTA dues* must be paid in full by **December 1** of the current year.
 - c. Some Florida PTA dues* must be paid by **December 1** of the current year.
5. Entries are only accepted on the advertised date and time. **No late entries will be accepted.** Arrangements can be made for early drop-offs, but only if it is pre-arranged and physically accepted by a member of the DCCPTA Cultural Arts Committee.
6. The Award Recipient Log (form B) must be attached to the Local PTA Participation Form (form A). Both forms can be downloaded from the Florida PTA website. Form B is used to create student certificates. All students who enter will receive a certificate.

Reminders and Hints for Successful Entries

To enter, a PTA must be in good standing for the Reflections Program: 1. DCCPTA & FPTA dues requirements are met (above), and 2. Local unit PTA/PTSA bylaws are current. Keep in mind that winning artwork is sent to State and those winners are sent to National. In these cases, your PTA bylaws will need to be current through the end of April of the next year. **Entries will NOT be accepted from PTAs or PTSAs NOT in good standing.**

When submitting entries, read and follow the Florida PTA instructions on how to package and attach the entry forms. Be sure to fill in all the appropriate blanks. Both the child and parent must sign the entry forms (all signatures must be original – not photo copied); in situations where a student cannot fill out the form or write legibly, a parent may sign his/her child's name.

IMPORTANT: The student must complete the Artist statement on the Official Entry Form. Failure to do this can result in the entry being disqualified.

*If not paid prior to December 1, DCCPTA will accept dues checks during the Reflections turn-in time. State dues are payable to: Florida PTA. Duval County Council dues are payable to: DCCPTA.



Teacher Supply Depot

The Teacher Supply Depot is a warehouse of reusable materials donated by businesses and community members. These materials are distributed **free** to Duval County public school teachers to enhance instruction in their classroom and promote student achievement.

Most of the items donated to the Teacher Supply Depot were destined for the landfill. Instead of adding to the county's solid waste disposal difficulties, these materials now end up as creative student projects and innovative teaching aids. Items include art, office, paper and science supplies; student incentives; overruns; punch-outs; end cuts and many other open ended materials.

Since its first opening in September of 1996, more than 1,400 contributors donated over \$35 million worth of supplies. By the end of the 2009-10 school year, the Teacher Supply Depot conducted 143 give-away days logging over 41,000 teacher, principal and PTA president visits.

The Teacher Supply Depot enjoys tremendous support from the business community, volunteers, the media and the many other individuals who are contributors. This project is a joint effort between the Duval County Public Schools', Warehousing Division, and The Duval County Council of PTAs/PTSAs.

For more information on donating or volunteering call the Teacher Supply Depot.

The Teacher Supply Depot

Old Lackawanna School
3108 Lenox Avenue (32254)
Phone: 381-7480
FAX: 381-7481
Coordinator: Chris Buckley

2010-11 Opening Dates

Time: 3pm - 6 pm

September 9
October 7
November 4
December 2
January 13
February 10
March 10
April 14



The Teacher Supply Depot Award

The local unit that volunteers the most hours at the Teacher Supply Depot during the course of a school year earns this award automatically. Duval County Council Board of Manager members do not count towards a school's participation since they are sponsors of the project.

Be sure to sign in the volunteer book at the Teacher Supply Depot to get credit. Have each person from your PTA sign on a page that has your PTA's name at the top rather than separate forms for each individual volunteering. On **April 15th**, all PTA forms will be tallied and the one with the most **recorded** hours will be the recipient of the Teacher Supply Depot Award presented at the Presidents' and Principals' Luncheon. Your volunteer support is essential to the continued success of the Depot. We appreciate all who volunteer.

Scholarship Fund Program



The Duval County Council of PTAs / PTSAs Scholarship Fund is intended for deserving students who plan on attending college. Applications will be sent to every high school guidance counselor in January. Scholarships will be announced at the DCCPTA Presidents' and Principals' Luncheon in May.

Southern Scholarship and Research Foundation, Inc.

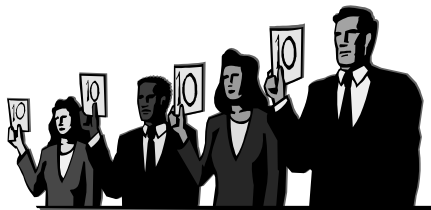
Efforts to find and foster capable and deserving high school and junior college students without sufficient economic means to further their education, led to the creation of the Southern Scholarship and Research Foundation, Inc. This organization specializes in helping academically gifted young people who value higher education, but would have to defer or never attain this goal without the Foundation's assistance and encouragement.

Financial support is manifest in the fully-furnished, rent-free houses in which students do their own marketing, meal preparation, household chores, and personal laundry at a savings of approximately half the normal cost.

Duval County Council of PTAs / PTSAs established a housing scholarship with the Foundation many years ago by pledging \$2,500. This is called a scholarship grant. In 1976-1977 Duval County Council established its fifth grant. In 1990-1991, Duval County Council sponsored yet another grant to help support the newly created scholarship house at the University of Florida. In the mid 1990's we expanded to include Bethune Cookman College and Florida A&M University. Prior to this time, scholarship housing was only available at Florida State University.

Your PTA/PTSA can make a contribution to this fund along with your Council Dues payment

Convention Fund Program



This fund provides hospitality for ALL delegates of Duval County PTAs and PTSAs at the Florida PTA Convention each year. It also helps defray expenses when the Convention is hosted in Jacksonville. These funds are dedicated and may be used only for the designated purpose.

Your PTA/PTSA can make a contribution to this fund along with your Council Dues payment



Vision Screening Program and Award

Duval County Public Schools Vision Screening Services is proud of the partnership with the Duval County Council of PTAs/PTSAs in providing vision screening volunteers to the students of DCPS for over 35 years. PTAs are vitally important in providing the volunteers needed to have a successful vision screening, and providing volunteers will automatically earn your PTA the **Vision Screening Award**.

The Vision Screening coordinators work with the PTAs every year to help plan, train and implement the vision screening at 157 public schools. Between elementary schools, 6th grade and 11th grade, we screen an average of 69,000 to 72,000 students per year.

As we all know, good vision is important to a child's success in school. Call the Vision Screening Services Office @ 858-1950 when you are ready to schedule your school's vision screening or if you have any questions or concerns.

Please see the following list to find the Vision Screening coordinator for your school:

Dorie White, 742-3134	Edie Brooks, 945-0280	Leighanne Harrison, 246-6725	Tracy Scott, 318-4758
A. Philip Randolph , Andrew Jackson HS, Andrew Robinson E, Arlington E, Biscayne Blvd E, Brentwood E, Dinsmore E, First Coast HS, Ft. Caroline E, Garden City E, Grand Park Ctr, Henry Kite E, Highlands E & M, James W. Johnson M, John Love E, Kirby Smith M, Lake Forest E, Longbranch E, Matthew Gilbert M, Mattie V. Rutherford Ctr, ML King E, New Berlin E, Northshore K-8, Oceanway E & M, Parkwood Heights E, Pickett E, Raines HS, Pine Estates E, Ribault M & HS, RL Brown E, Rutledge Pearson E, Sallye Mathis E, San Mateo E, Sheffield E, St. Clair Evans, Terry Parker HS	Atlantic Coast HS, Bank of America Satellite, Beauclerc E, Biltmore E, Chaffee Trail E, Crown Point E, Eugene Butler M, George Carver E, Holiday Hill E, Hyde Park E, Jax Heights E, Hyde Grove E., John E Ford E, Joseph Stillwell M, La Villa School of the Arts, Lakeshore M, Lee HS, Mandarin Oaks E, Mandarin M & HS, Northwestern M, Oak Hill E, Pine Forest E, Pinedale E, Ramona Blvd E, Reynolds Lane E, Rufus Payne E., RN Upson E, RV Daniels E, SA Hull E, SP Livingston E, Stonewall Jackson E, Thomas Jefferson E, Twin Lakes E & M, Susie Tolbert E, Timucuan E, West Jax E, Westview K-8, Whitehouse E.	Abess Park E, Alden Rd ESE, Alimacani E, Arlington M, Arlington Heights E, Atlantic Beach E, Axson E, Brookview E, Chets Creek E, Don Brewer E, Englewood E & HS, Greenfield E, Finegan E, Fletcher M & HS, Ft. Caroline M, Hogan Spring Glen E, Jax Beach E, Justina Road E, Kernan E & M, Lake Lucina E, Landmark M, Lone Star E, Love Grove E, Mayport M & Mayport E, Merrill Rd E, Neptune Beach E, Sabal Palm E, San Pablo E, Sandalwood HS, Seabreeze E, Southside Estates E, Southside M, Windy Hill E, Woodland Acres E.	Annie Morgan E, Baldwin M/HS, Bartram Springs E, Bayview E, Cedar Hills E, Carter Woodson E, Central Riverside E, Chimney Lakes E, Crystal Springs E, DA School, Darnell Cookman M, Dupont M, Ed White HS, Enterprise Acad, Fishweir E, Frank Peterson, Forrest HS, Gregory Drive E, Greenland Pines E, Grand Park E, Hendricks Ave E, JEB Stuart M, Jefferson Davis M, John Stockton E, Kings Trail E, Landon J, Loretta E, Mamie Jones E, Normandy Village E, Ortega E, Palm Ave, Paxon M and HS, Sadie Tillis E, San Jose E, Spring Park E, Stanton HS, Venetia E, West Riverside E, Wolfson HS.



DCCPTA Eye Exam/Eyeglass Fund

Financial support from every PTA/PTSA is also needed and encouraged. During the last school year over 6,200 students were referred for further medical evaluation. The Duval County Council Eye Exam/Eyeglass Fund provided over \$9,000 to make this program successful. As you establish your PTA/PTSA budget for the year, please consider adding a line item to contribute to this important effort. A contribution of \$100 supplies an eye exam and glasses for one student. Receiving \$200 from each local unit in Duval would mean that we could help over 300 students see better and consequently, be more successful in school.



/PTSA can make a contribution to this fund along with your Council Dues
2010/11 Duval County Council PTA Dues



For Local PTA Treasurer

Your Local Unit bylaws require that your PTA pays Duval County Council PTA annual dues.

Your Local Unit dues **\$35.00** are *payable by:* **NOVEMBER 1**

Checks should be *payable to:* **DUVAL COUNTY COUNCIL OF PTAs/PTSAs**

And *mail check & payment form to:* Duval County Council Treasurer
 Mary Lobello
 PO Box 5397
 Jacksonville, FL 32247

INCLUDE Local Unit contributions for the following on this form:

1. Scholarship Fund
2. Convention Fund
3. Eye Exam/Eye Glass Fund

Direct your questions to: **Mary Lobello, DCCPTA Treasurer**
 Email: **msbljr@aol.com**



2010-11 - Duval County Council PTA Dues Payment Form

Please fill out this form and include it with your check and mail to:

*Duval County Council PTA Treasurer
 Mary Lobello
 PO Box 5397
 Jacksonville, FL 32247*

NAME of PTA/PTSA (please print) _____

ADDRESS _____

PRESIDENT _____ PHONE # _____

TREASURER _____ PHONE # _____

DCCPTA Local Unit Dues \$ **35.00** _____

Eye Exam/Eye Glass Fund \$ _____

Scholarship Fund \$ _____

Convention Fund \$ _____

=====

Total Paid to Council \$ _____

2010 -11 State & National Dues

For Local PTA Treasurer

Use this form for **Membership Dues** and **Founder's Day Gifts** -- **ONLY**

-- **NOT** for additional cards --

Please **COPY** this form as needed

PTAs are legally required to send membership payments to the state office MONTHLY or AS COLLECTED. State and National dues should never be used as a means of funds for local units and be considered a part of the local unit's budget. As of March 31, PTAs not having paid any dues will be considered inactive and appropriate action will be taken. Any late dues received after March 31 will not be credited to the current school year. For the Reflections Program, some dues need to be paid to the State office by December 15th of the submitting school year. This does not mean County Council dues. Your county may require that their dues be paid by their submitting date.

Each person joining the PTA automatically becomes a member of the state and national organization.

The state portion of a member's dues is \$1.25; the National portion is \$1.75.

Each local unit president receives a free subscription to National PTA's *Our Children* and *Florida E-Newsletter*.

Please Fill Out Completely

Date _____	_____ Members @ \$3.00 each	\$ _____
National PTA ID# _____ (must be filled out)	Founder's Day Gift	\$ _____
Total Amount Enclosed		\$ _____

County _____		
Name of PTA _____	Phone (____) _____	
School Address _____ (must be filled out)	City _____	Zip _____

President's Name _____	Phone (____) _____
Treasurer's Name _____	Phone (____) _____

Make checks payable to Florida PTA and mail to:

Florida PTA
1747 Orlando Central Parkway
Orlando, Florida 32809

Please Note:

- There is a **\$30.00** charge for returned checks.
- Be sure signatures are correct.
- Be sure to send the correct amount - refunds will NOT be paid when the wrong amount is sent.

Membership: An Investment in Children

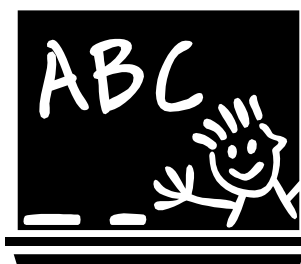
Each member of PTA invests **\$3.00** of their membership dues in the State and National PTAs to promote the welfare of ALL children and youth. The intangible benefits cannot be measured, but here are a few of the tangibles:

The Florida Congress of Parents and Teachers, with its share of \$1.25 per member:

1. Sends Kit of Materials, with State and National materials, to all local unit presidents and state board members.
2. Maintains a state office in Orlando, with an office director and an office staff, to serve about 1,400 local units with a membership over 386,000.
3. Publishes the *FLORIDA PTA BULLETIN* and sends a complimentary copy to each local unit president .
4. Underwriting expenses of the annual state convention where state priorities are set and other business is conducted.
5. Pays expenses of state board members to annual leadership conference.
6. Finances special projects such as: workshops on Current Issues, Parenting, Discipline, Family, Communication, Safety, Citizenship, Legislation, and the printing of timely and pertinent materials as needed.
7. Helps to secure adequate laws for the protection and care of all children and youth by having the legislation committee attend the meetings of the State Legislature and keeping the membership informed of proposed legislation affecting children.
8. Finances state representation at conferences in and out of state.
9. Pays minimum expenses of state board members, executive committee and special committees when it is necessary to efficiently conduct the business of the Florida Congress of Parents and Teachers.
10. Provides Field Service and Leadership Teams upon request.

The National Congress of Parents and Teachers, from its \$1.75 per member:

1. Provides NPTA annual resource kit/publications - a wealth of materials and aids for local and state use.
2. Publishes *OUR CHILDREN*. Subscriptions are available to every member for \$15.00 per year. ALL local unit presidents receive their copies free.
3. Underwrites the national convention where national priorities are set and other business conducted.
4. Provides extension services through its field workers and representation at state meetings.
5. Supports national conferences and workshops and provides field services.
6. Keeps a volunteer legislative committee in Washington, which works for the welfare of ALL children and youth through legislation. *WHAT'S HAPPENING IN WASHINGTON* is available free through email for those members who are interested in keeping abreast of legislation.
7. Maintains the National Office in Washington, D.C. with its multiplicity of duties in serving a membership of more than six million---fifty-four state congresses including Washington D.C., the European Congress, Pacific Congress, and Puerto Rico.





Correct usage of the PTA or PTSA Service Mark

PTA and *PTSA* are registered service marks of the National PTA and may be used only by those in membership with the National PTA. Do NOT use periods, commas, hyphens, or lowercase letters when referring to ***PTA*** or ***PTSA***. When used as a plural noun, it should be ***PTAs*** or ***PTSAs***. This is in keeping with the Florida PTA and National PTA guidelines. This information may be found in the Florida PTA and the National PTA kits of materials or on their websites.

The PTA or PTSA Logos

The PTA and PTSA logos may be downloaded from the “Restricted for Members Only” link on the National PTA website: **www.pta.org**

